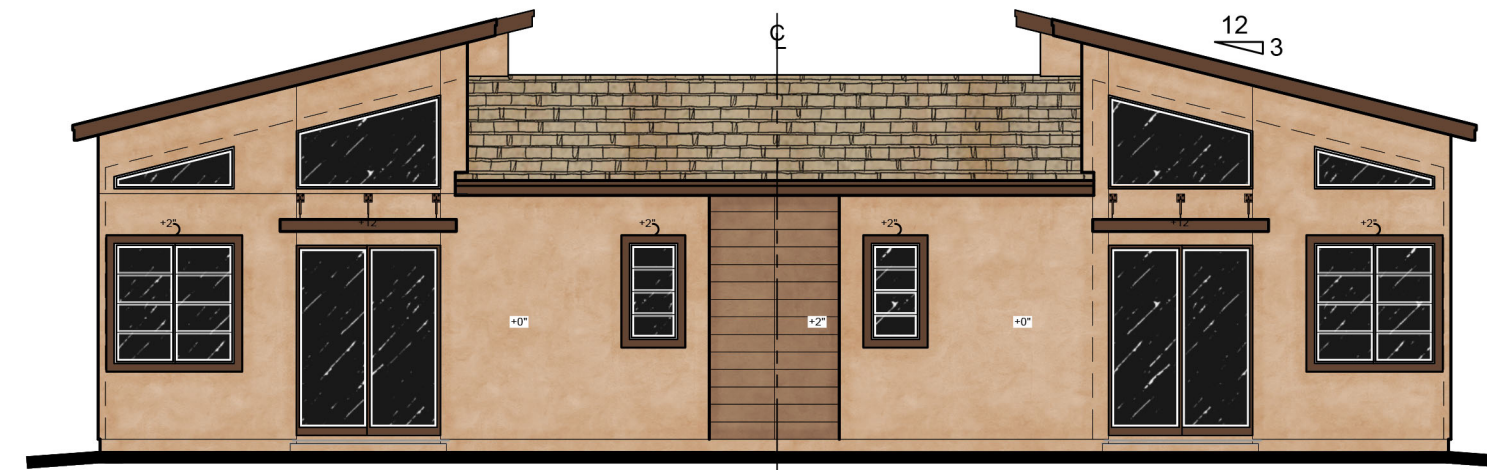
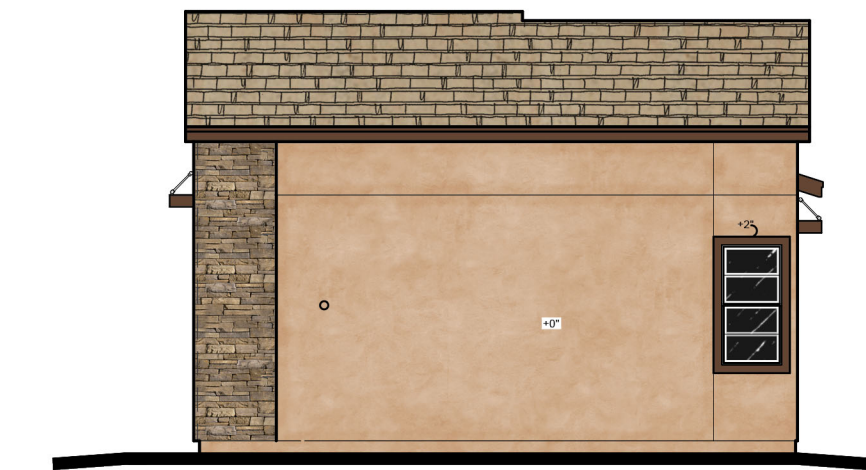


LEFT ELEVATION
1/8" = 1'-0"



REAR ELEVATION
1/8" = 1'-0"



RIGHT ELEVATION
1/8" = 1'-0"



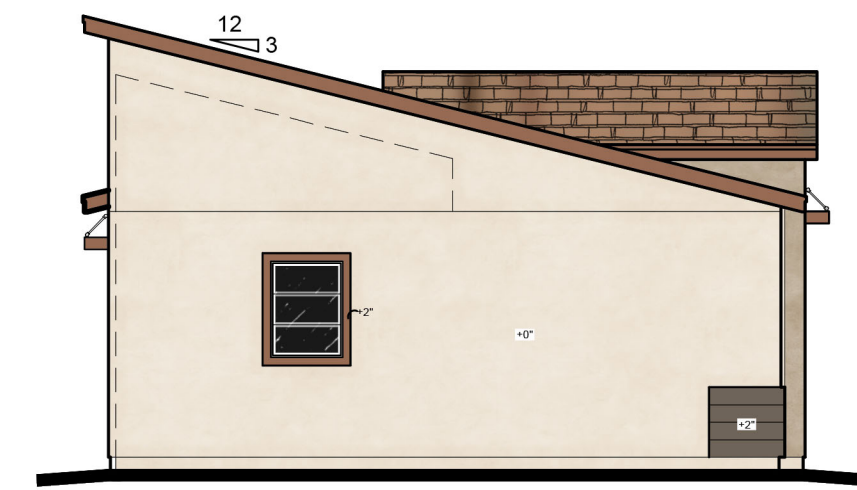
FRONT ELEVATION
3/16" = 1'-0"

Building 1 - Plan 1 / Plan 1 | Northern107 | Glendale, AZ

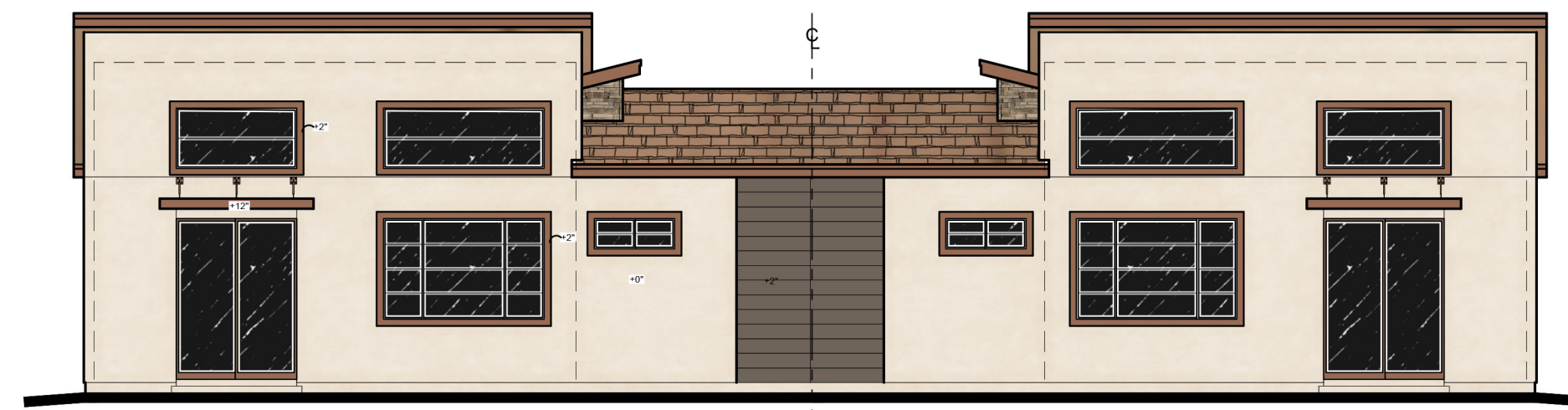
4-13-2020

Truvista Holdings
7904 e. Chaparral Rd.
#A110 - 603
Scottsdale, AZ 85250

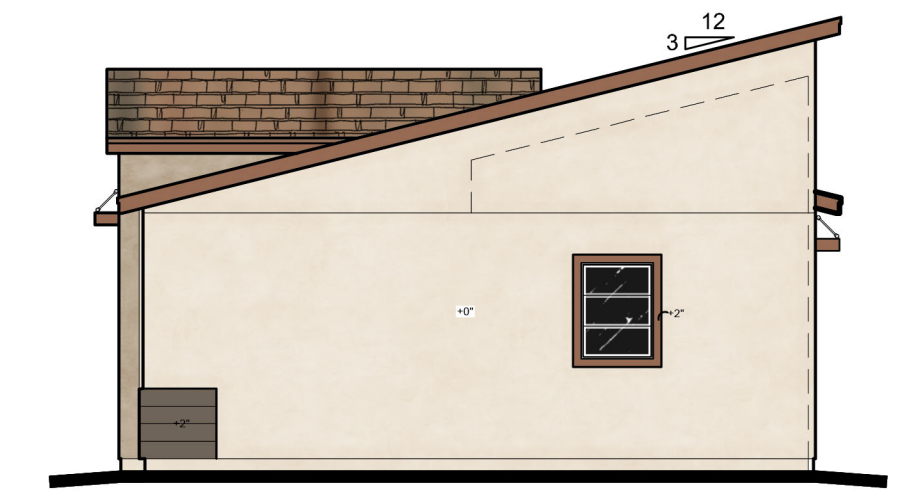
FELTENGROUP
ARCHITECTURE | ENGINEERING | FORENSICS
PHONE: 602.867.2500 WWW.FELTENGROUP.COM
www.feltengroup.com copyright 2020



LEFT ELEVATION
1/8" = 1'-0"



REAR ELEVATION
1/8" = 1'-0"



RIGHT ELEVATION
1/8" = 1'-0"



FRONT ELEVATION
3/16" = 1'-0"

Building 2 - Plan 2 / Plan 2 | Northern107 | Glendale, AZ

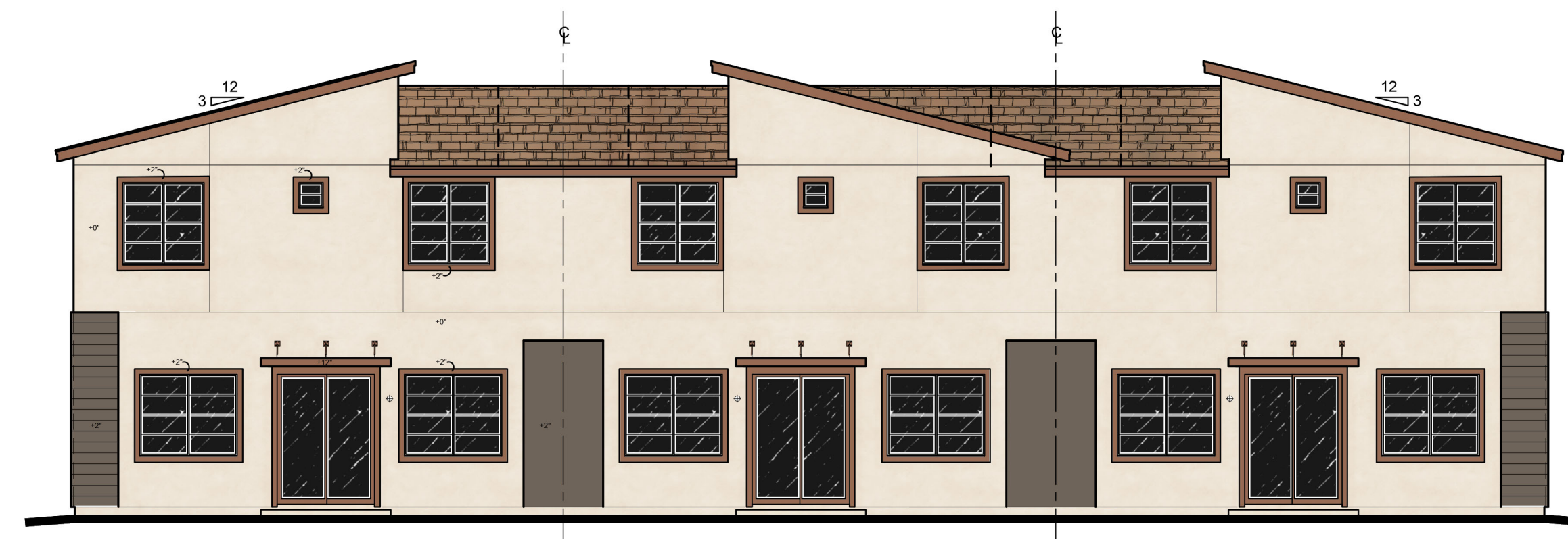
4-13-2020

Truvista Holdings
7904 e. Chaparral Rd.
#A110 - 603
Scottsdale, AZ 85250

FELTENGROUP
ARCHITECTURE | ENGINEERING | FORENSICS
PHONE: 602.867.2500 WWW.FELTENGROUP.COM
www.feltengroup.com copyright 2020



LEFT ELEVATION
1/8" = 1'-0"



REAR ELEVATION
1/8" = 1'-0"



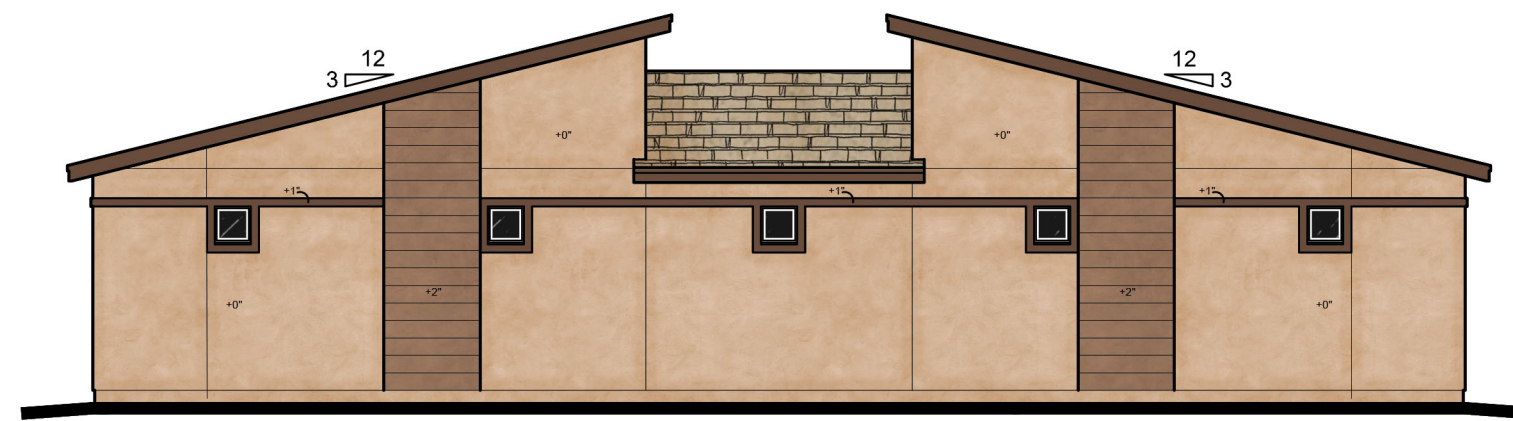
RIGHT ELEVATION
1/8" = 1'-0"



FRONT ELEVATION
3/16" = 1'-0"



LEFT ELEVATION
1/8" = 1'-0"



REAR ELEVATION
1/8" = 1'-0"



RIGHT ELEVATION
1/8" = 1'-0"



FRONT ELEVATION
1/4" = 1'-0"

- CONCRETE ROOF TILE
- SCORED STUCCO
- SCORED STUCCO POP-OUT
- COACH LIGHT
- WOOD FASCIA
- STUCCO POP-OUT
- STUCCO BODY
- SCORED STUCCO POP-OUT

OVERALL HEIGHT
T.O. PLATE
± 16'-0"
9'-1"
FIN. FLR.